

ES4013 RT62/RT56 RB211-24G rating upgrade

Extract the maximum benefit when upgrading your gas generator



Engineered solution purpose

This engineered solution has been introduced to match either the RT62 or the RT56 power turbines to the higher temperature rating of the RB211-24G gas generator. The upgrade is a mandatory requirement if the full available power is to be realised when an earlier variant of the RB211 is being converted to 24G rating.

Applicability

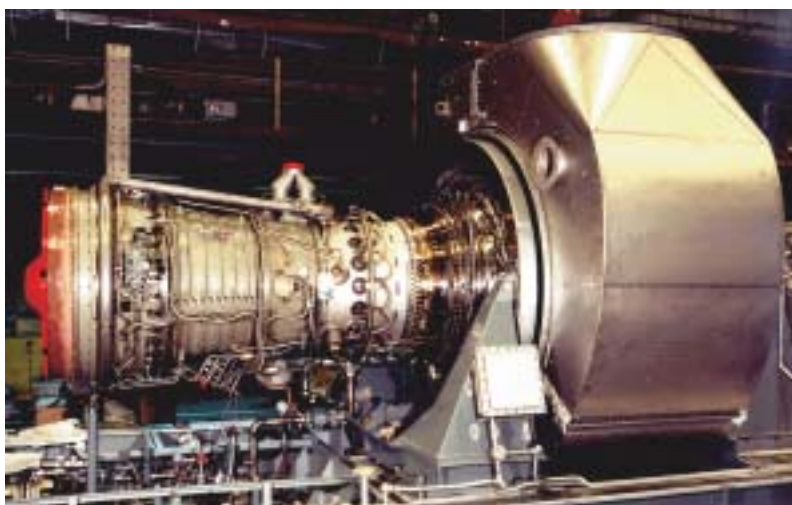
All RT62 and RT56 power turbines built prior to 1996

Technical description

Power turbine components are replaced by current build standard materials and designs. An engineering study may be required to establish whether a 310 first stage vane match is applicable for applications experiencing high ambient temperatures.

Benefits

The upgrade realises the benefits of increased power when the RB211 driver is upgraded to 24G ratings and reduces the risk of component failure when operating at the higher temperatures of the -24G. The upgrade also brings the power turbine in-line with the current 24G



Experience

The projects listed below are not an all-inclusive list, but are representative of projects where this upgrade has been applied:

BP Anschutz Ranch - 2
Occidental Premium - 1
TCPL - 5 +
PG&E - 3
Osaka PetroChemical - 1

Scope of work

Replace blade, vanes, diffusers, and casing dependent upon revision level of the turbine.

The rotor is upgraded at an overhaul base whilst the remainder of the work is carried out on-site.

Bill of materials

Blades
Vanes
Casings
Diffusers

Undertaken

At site - stationary components
Overhaul - rotor

Bundling opportunities

Power turbine bearing upgrade
[ES4014]

RT56 second stage vane and casing upgrade [ES4006]

RT62 rotor tip seal upgrade [ES4007]

Dry diaphragm coupling conversion
[ES5002]

Complete package refurbishment
[ES6001]

RB211-24C to -24G upgrade [ES4002]