

## ES3010 RB211 VIGV transducer upgrade

Increase the reliability of Variable Inlet Guide Vane [VIGV]



### Engineered solution purpose

This engineered solution replaces the Linear Variable Displacement Transformers (LVDT) with Rotary Variable Differential Transformer (RVDT).

### Applicability

All RB211 gas generators using LVDT as part of closed loop VIGV control.

### Technical description

A single dual-output RVDT is installed to replace the 3 LVDTs used in the original configuration.

### Benefits

The simpler and stronger RVDT system eliminates inaccuracies caused by the LVDT system reading from 3 different locations around the actuating ring.

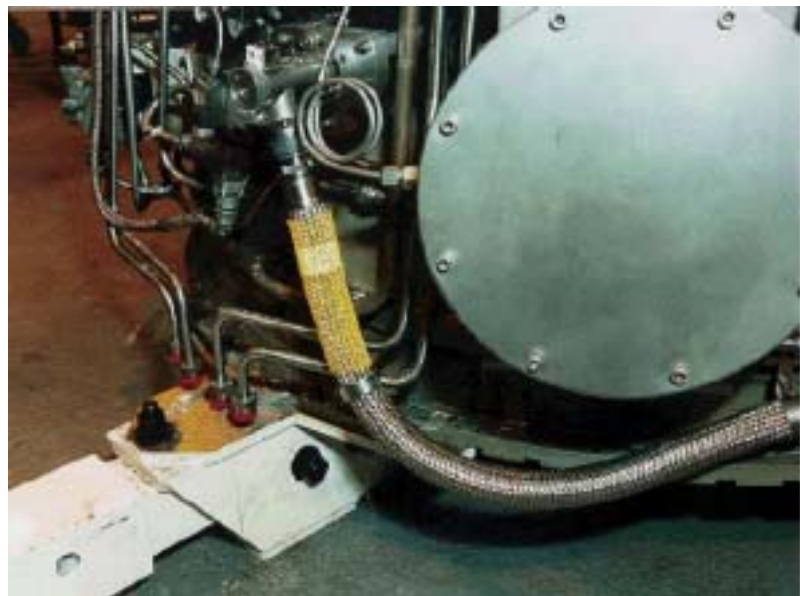
### Experience

The Rotary Variable Differential Transformer is the current RB211 production standard and retrofits have been undertaken for TCPL and Total.

### Scope of work

Replace LVDT with RVDT  
Control modifications  
Wiring

### Bill of materials



Rotary Variable Differential Transducer (RVDT)

### Undertaken

At site

### Bundling opportunities

Controls upgrade [ES6006]

Instrumentation upgrade [ES3007]